

## Tool 5.1: Sample Workflow Diagrams

Figure 5.2

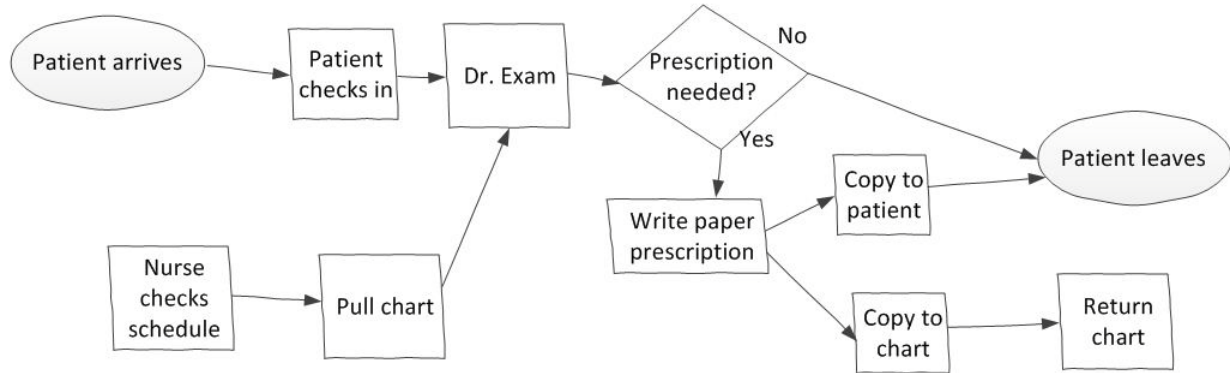


Figure 5.3a

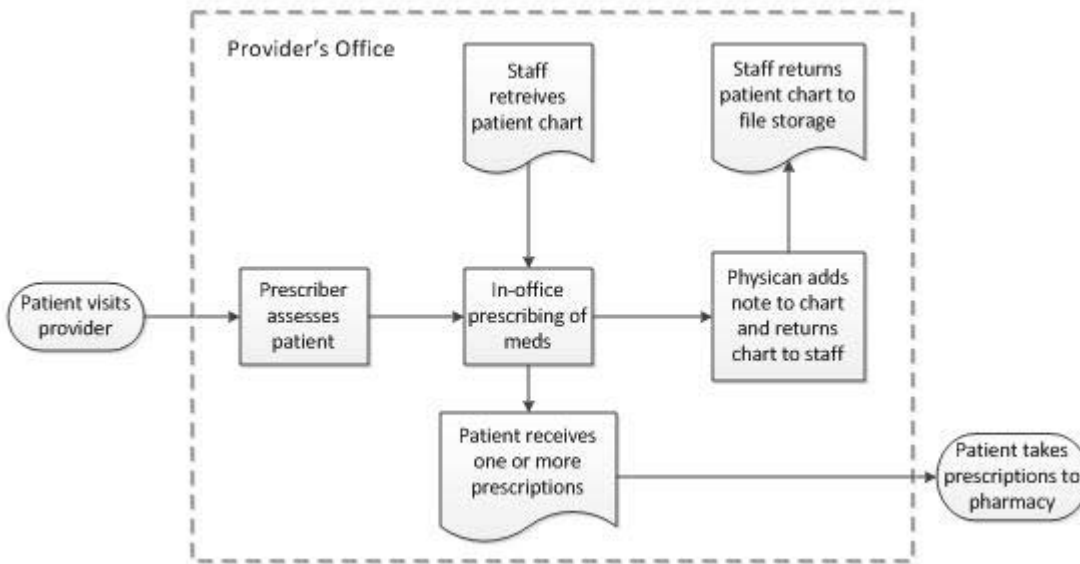


Figure 5.3b

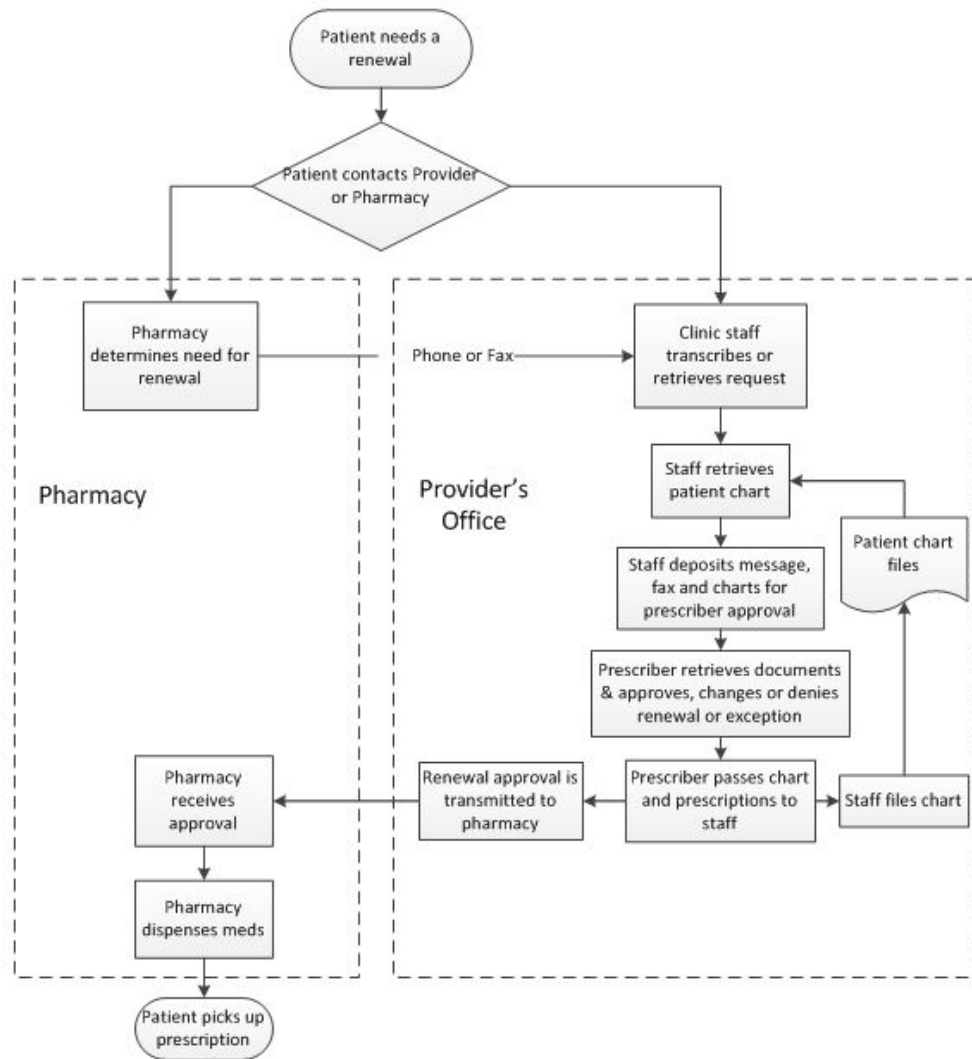
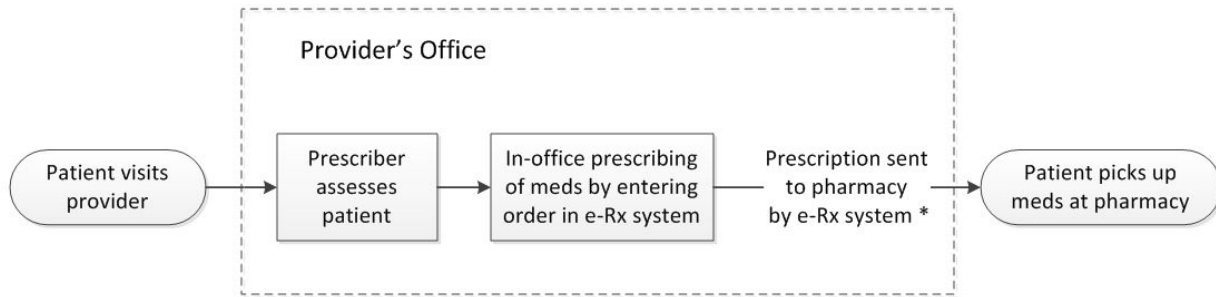
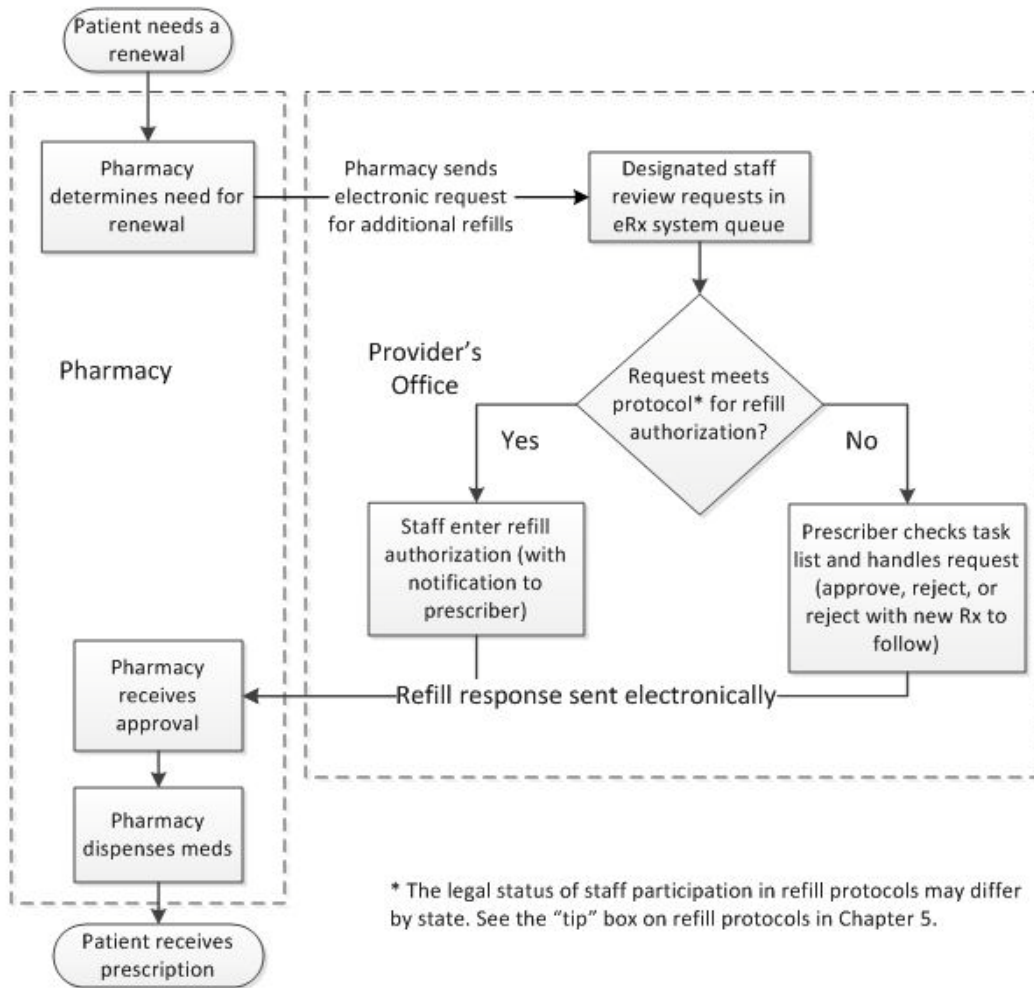


Figure 5.4a



\* Capacity to electronically transmit controlled substance prescriptions is not yet widely available at this time. Please check with your software vendor.

Figure 5.4b



\* The legal status of staff participation in refill protocols may differ by state. See the "tip" box on refill protocols in Chapter 5.